

# How to Work with Cloud Cuddle®

The single word that comes up over and over again when people see and touch Cloud Cuddle® is *luscious*. A Cuddle® print on one side and solid white Cuddle® on the other creates this two-sided coziness—perfect for jackets, robes, sweatshirts, and blankets.

Let's get started:

## What we love about Cloud Cuddle®—and why we love it!

- |  |  |
|--|--|
| <b>WHAT:</b> Cloud has little to no stretch.   | <b>WHAT:</b> Cloud Cuddle® is easy to serge.   |
| <b>WHY:</b> Less pinning is needed—great for people new to Cuddle®.                                  | <b>WHY:</b> Although Cloud is a knit and will not fray, serging gives the edges a finished look.<br><i>Tip: Lift the knife out of the way to avoid excessive Cuddle® dust.</i> |
| <b>WHAT:</b> Cloud Cuddle® is double-sided.  | <b>WHAT:</b> Seams can be pressed open.  |
| <b>WHY:</b> Soft and comfy on both sides with no need to add a lining.                               | <b>WHY:</b> Unlike some knit fabrics, the press stays in! Makes for a smooth interior in garments. Use a synthetic or polyester setting.                                       |
| <b>WHAT:</b> Curves are easy to sew.   |  |
| <b>WHY:</b> Want an unbelievably cozy shirt or sweatshirt? Set-in sleeves are no problem with Cloud. |  |



## Favorite Notions for Cloud

**DOUBLE-SIDED BASTING TAPE byAnnie** • A double-sided tape perfect for inserting zippers and securing hems. Only 1/8" wide. [byannie.com](http://byannie.com)

**INTERFACING/STABILIZER Pellon SF101 (Shape-Flex)** • An all-purpose, woven, fusible interfacing.

**CLOSURES Velcro® One-Wrap** • A thinner hook-and-loop tape with double-sided convenience.

**RIB KNIT FABRIC**  
Great for cuffs and necklines. Check out local garment fabric shops.

**KNIT STAY TAPE SewKeysE** • Add the right touch of stability on shoulder seams. [emmaseabrooke.com](http://emmaseabrooke.com)

**WASHING INSTRUCTIONS**

- For best results, wash finished projects in cool water with a gentle detergent.
- Do not use fabric softener.
- Dry in a no-heat dryer or line dry.

## Garment Sewing Tips

### 1 Add structural elements.

Consider patterns with a yoke, princess seams, or a zipper.



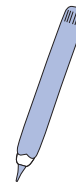
### 2 Interface buttonholes.

Use an all-purpose, woven, fusible interfacing.



### 3 Marking.

Fabric-safe markers work well.  
*Option: Place a pin or make a small snip in the seam.*



### 4 Use a stretch stitch.

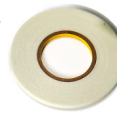
Kids put a lot of pressure on seams. A "lightning bolt" (stretch) stitch will keep you from needing seam repairs. Look for this symbol on your machine.



### 5 Easy hems and zippers with narrow double-sided basting tape.

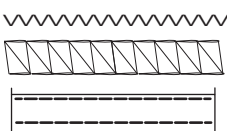
**HEMS:** Press hem up, apply basting tape, and zigzag the raw edge. Cloud doesn't stretch, so it won't grow as you stitch.

**ZIPPERS:** Apply to the zipper tape, press in place, and stitch confidently.



### 6 Seam finishing options.

Because Cloud does not ravel, there is no need to finish interior seams. If you'd like a finished edge, zigzag, serged, or flat-felled seams are good choices.



### 7 Necklines and cuffs.

Use a color-coordinated rib knit fabric around necklines and cuffs. (Cloud does not stretch enough for a pull-on.)

*Option: Make a closure with buttons, ties, or a zipper.*